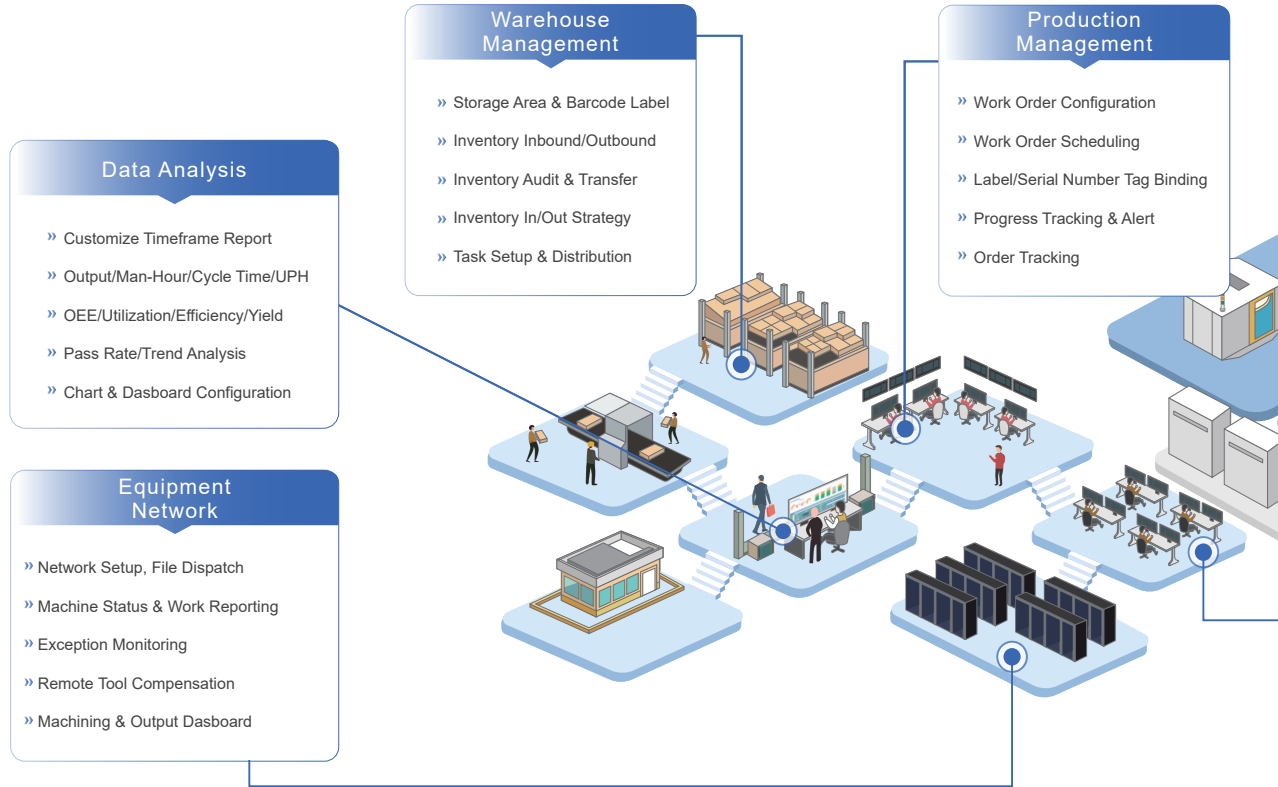




SynFactory Introduction

SynFactory leverages real-time monitoring of production equipment and centralized digital data management to integrate key operational workflows, including production planning, quality control, asset management, and inventory optimization. Utilizing advanced tools such as monitoring dashboards, statistical alerts, and trend analytics, it empowers decision-makers with actionable insights, driving operational efficiency and cost reduction.



Key Pain Point in Factory Management

Limited Equipment Transparency

Lack of internet connectivity on old machine
 Varied equipment brands and communication protocols
 Isolated production equipment data



Inefficient Quality Issue Handling

Lack of standardized quality control
 Outdated paper-based inspection records
 High defect rate



Challenging Production Planning

Inconsistent order delivery dates
 Uncertain procurement schedule & quantities
 Disorder equipment schedule & staff roster



Frequent & Long Downtime

Unclear equipment quantity and condition
 Maintenance plan execution delay
 Difficult maintenance activity tracking



Complicated Production Progress

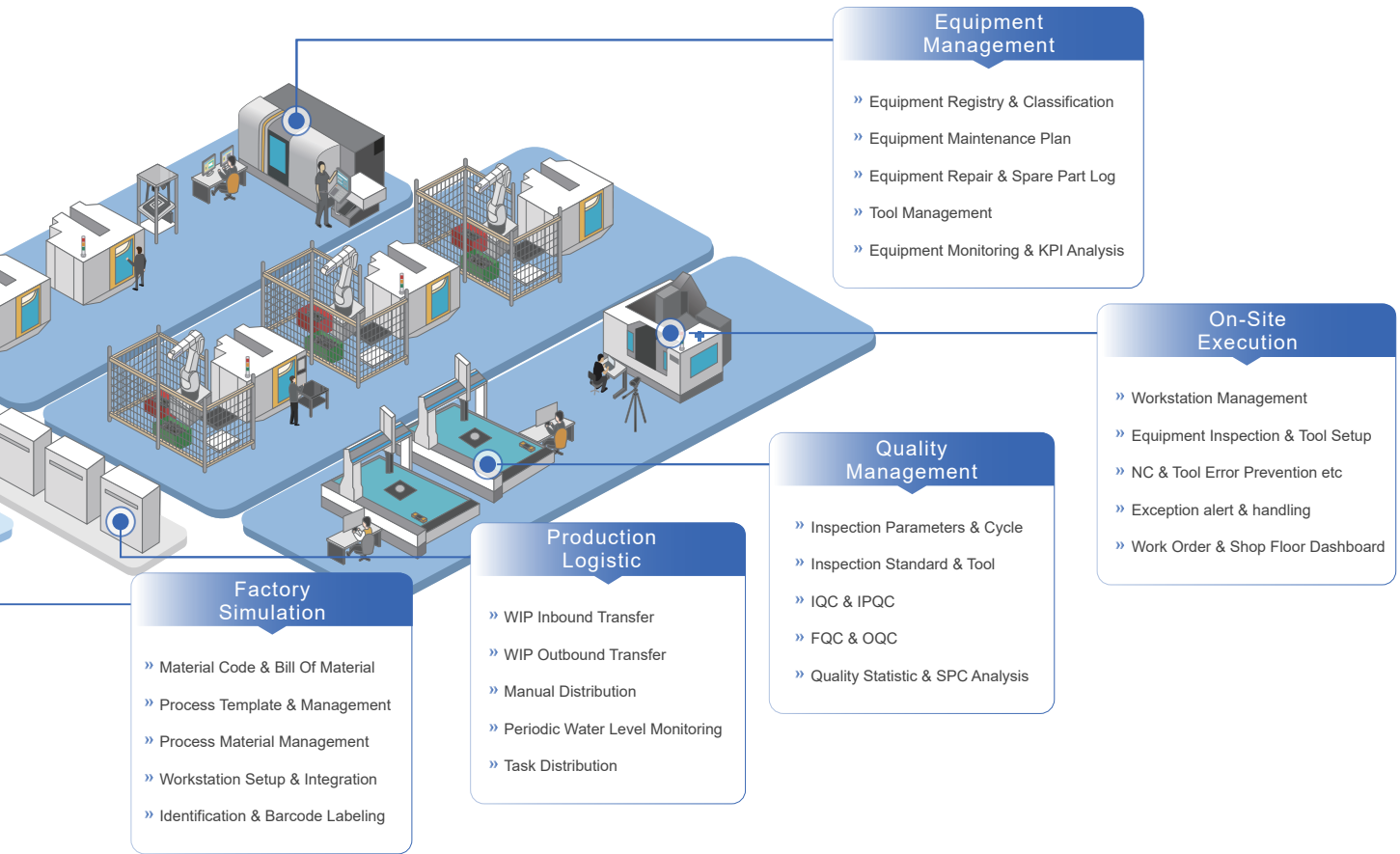
Production output is hard to quantify
 Inefficient material availability tracking
 Different cycle time across multiple processes



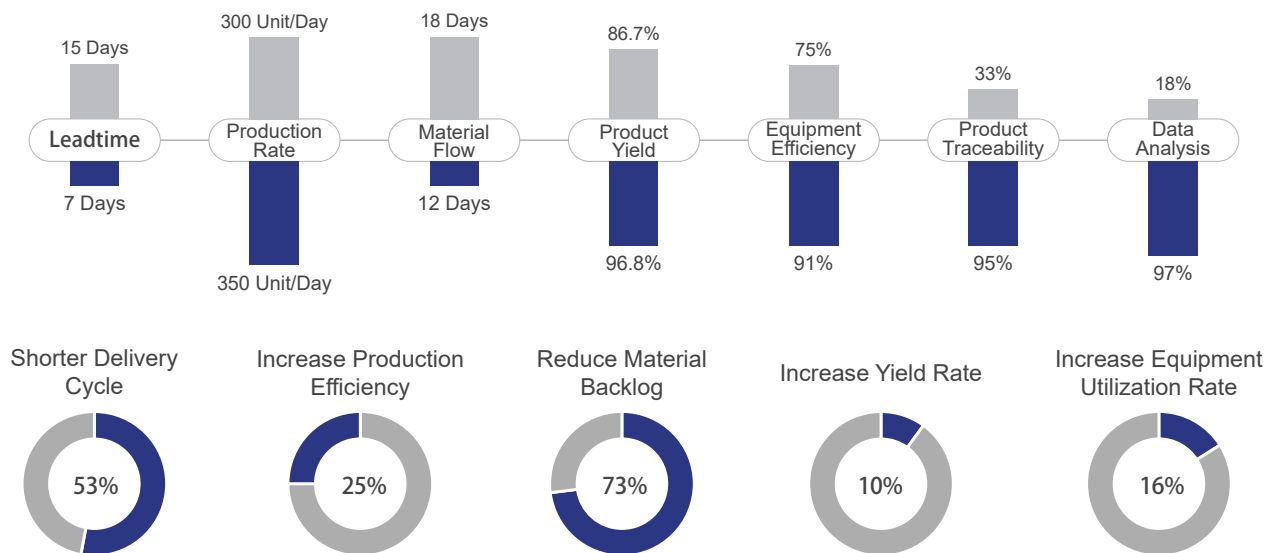
Disorient Material Transfer

Manual material logging
 Manual input material transfer record
 Poor material traceability





Highly effective in costs reductions and efficiency improvement



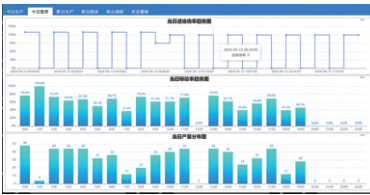
Equipment Network ▾



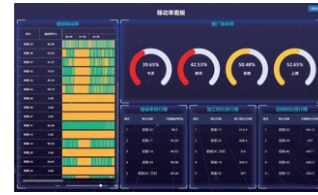
« Support connection of multiple equipment types



« Real-time equipment status monitoring



« Access to equipment information & key parameters



« Multiple dashboard with customized data & charts

Production Management ▾



« Quick work order creation and adjustment



« Convenient order tracking with cross platform data sharing

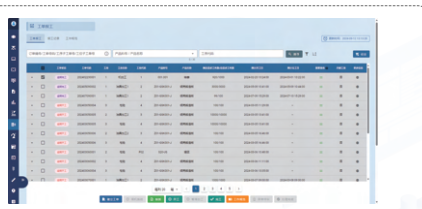


« Easy production tracking with workpiece serial number generation and binding

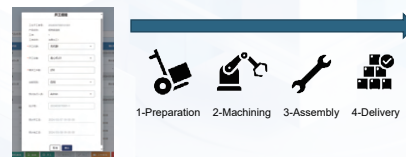


« Clear rework product data statistic and distribution

On-Site Execution ▾



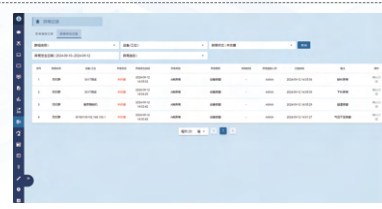
« Real-time work order reporting



« Sequential production reduce equipment idle time



« Automatic employee performance evaluation

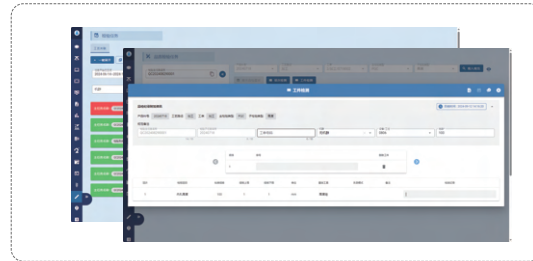


« Instant exception alert & real time synchronize dashboard

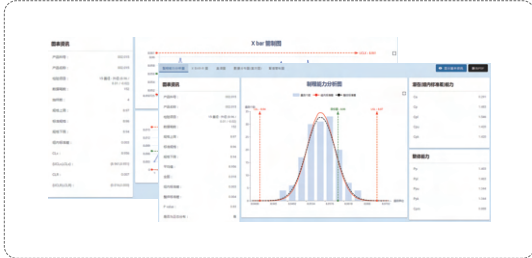
Quality Management



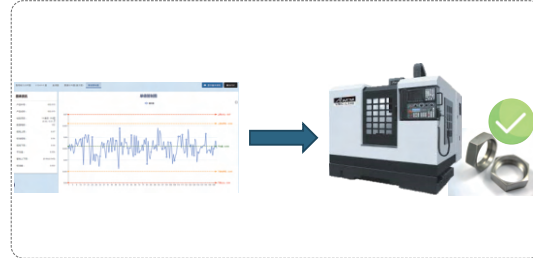
- Integration with process management enable centralized data management, and systematic workflow



- Efficient measurement data collection by handheld gauges and advanced measurement equipment integration

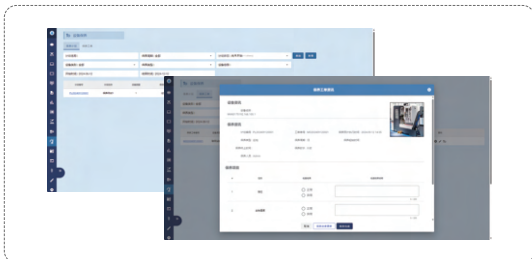


- Supports SPC dashboards and individual control charts for timely and accurate monitoring of production quality



- Dedicated remote tool compensation function for metal processing industry, effectively ensuring processing quality

Equipment Management

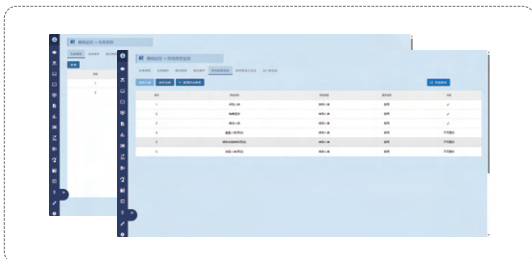


- Automatically generate maintenance schedule to ensure regular maintenance and extend equipment lifespan



- Immediate reporting for equipment failure, quick feedback and updates on repair status, ensuring optimal equipment uptime

Inventory Management



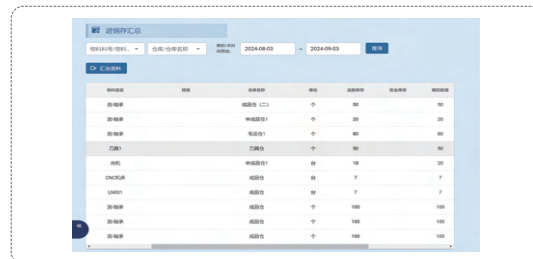
- Basic information settings such as warehouse management, storage locations, movement, and inbound/outbound rules



- Real-time inventory tracking, with early procurement alert to prevent production stoppages due to materials shortages



- Real-time inventory check, improving data accuracy through regular or occasional comparisons with actual stock levels



- Inventory reports provide material distribution data according to designated locations, enhancing material retrieval efficiency

Module	Functions
Product Data Management	Material Categories & Documentation, Product Manufacturing Process & Setup and File Management & Assignment BOM Management, Process Material Allocation, Customer & Supplier Record and Workstation Setup
Equipment Network	Equipment Network : Cloud File Dispatch, Subscription Setting and Network Setup Production Dashboard : Real-Time Utilization Dashboard & Machining Record Statistic and Equipment & Production Output Dashboard
Production Management	Worklog Planning and Order Tracking Batch/Serial Number Barcode Binding, Batch/Serial Number Rules, WIP Statistics, Production Progress and Production Configuration Work Order Scheduling, Equipment Load Validation, Process Start Time, and Process Completion Time
On-site Execution	On-Site Report : Work Order, Work Order Statistic, Personnel Check In/Out Personnel Performance : Performance Dashboard, Shift Performance Overview, Wage Distribution & Payroll Statistics Data Export : Export of data tables and defect statistics reports Production Preparation : Work Order Receipt, Data Query, Machine Setup, Fixture Loading/Unloading, Equipment & Production Inspection Label Issuance : Serial Number, Label Splitting, Work Report Records, Progress Inquiry, On-Site Execution Exception Handling : Exception Call Log and Notification Kanban Error Proofing : Material, Parameters, NC Program, Fixture, Cutting Tool etc Process Control : Control Configuration (e.g., Work cannot begin until the equipment inspection is complete) Standard Value Setting : Labour time, Throughput Yield (TPY), Overall Equipment Efficiency (OEE), Jobs per Hour (JPH)
Quality Management	Quality Settings : Inspection Category, Inspection Item, Inspection Standard, Inspection Tool & Inspection Task Inspection Records : IQC, IPQC, FQC, OQC Quality Kanban : Quality Yield Kanban, Fault Reporting, SPC Kanban, Process Capability Kanban
Equipment Management	Equipment Management : Equipment List, Service & Maintenance, Exception Report & Configuration Settings Tool Management : Tool Life Management, Tool Life Record, Cutting Tool Settings Fixture Management : Jigs/Fixtures, Fixture Life Management, History Record, Configuration Settings Fixture Movement : Fixture Issuance, Fixture Outbound, Fixture Return
Warehouse Management	Inventory Action : Stock in/out, Audit, Transfer Inventory Inquiry : Display, Movement Records, Inbound/Outbound Summary, Inventory Settings Warehouse Setting : Storage Location, Attributes & Barcode Label etc Preceding Document : Sales Order (SO), Production Plan & Purchase Order (PO) Barcode Label : Configuration, Hierachy, Issuance & History Task Configuration : Stock In/Out, Order Picking & Tasks Binding with Instructions Warehouse Strategy : Stock In/Out Strategy (Shortest Path, Same Number Proximity, FIFO, Attribute Based Priority) Document Summary : Receipt, Inbound, Outbound, Transfer Query & Integration Warehouse Metric : Inventory Turnover Rates, Expiring Inventory Quantity & Value, Inventory Weight & Volume and Utilization etc
Production Distribution	WIP Management : WIP Setting (Zone, Location, Attribute), WIP Inflow/Outflow, WIP Inventory WIP Level : Manual Distribution, Regular Level Checks, and Task Distribution Tasks Logistics Network : Logistics Network Setup, AGV/Automated Storage System (ASRS) Routing Instructions
Data Analysis	Production Quality Analysis : Output/Man-Hours/Cycle Time/UPH; Achievement Rate; OEE/Utilization Rate/Yield Rate etc Process Quality Analysis : Pass Rate, First Pass Rate, Defect Causes, Trend Graphs, Pareto Charts; SPC, CPK & CMK etc Equipment Metrics Analysis : Uptime, Downtime, Failure Count, MTBF, MTTR, Unscheduled Downtime & MTTF etc Dashboard Management : Dashboard Configuration and Smart Shuffle Smart Dashboard : All-in-One Control Panel, Personnel Performance, Quality Management and Work Order Tracking Query Configuration : Data Source Definition, Chart Configuration and Display Configuration
ESG	Energy Management : Dashboard, Real-time Data, Trend Analysis, and Energy Consumption Settings

LEANTEC Intelligence Co., Ltd.
No.25, Yanfa 2nd Rd., East
Dist., Hsinchu City 300, Taiwan
☎ 886-3-6663553
☎ 886-3-6663505
✉ sales@leantec.com.tw

LEANTEC Intelligence Co., Ltd.
2F., No.2, Jingke 3rd Rd.,
Nantun Dist., Taichung City 408
☎ 886-4-23550621
☎ 886-4-23550621
✉ sales@leantec.com.tw

Suzhou LEANTEC Intelligence Co., Ltd.
Building B, No.9 Chunhui Road, Suzhou
Industrial Park, China
☎ 86-512-69008860
☎ 86-512-65246029
✉ service@syntecclub.com.cn



<https://www.leantec.com.tw/default.aspx>

Specifications and external appearance are subject to change without notice.

Copyright © 2025 LEANTEC Inc. All rights reserved
Catalog Number : 202501-V1